

Fixed castor EDF 180 TLK

Extra Heavy Duty Series ED - Wheel TL



-30 °C - +80 °C

swivels easily

wear resistant

shock proof

floor protective

weather proof

Wheel



Tread: cast polyurethane, 95±3 Shore A

Core: De-cast aluminium alloy

Fork

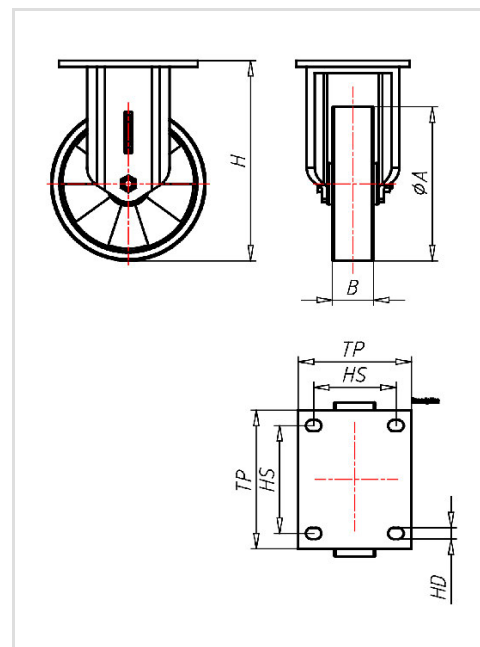
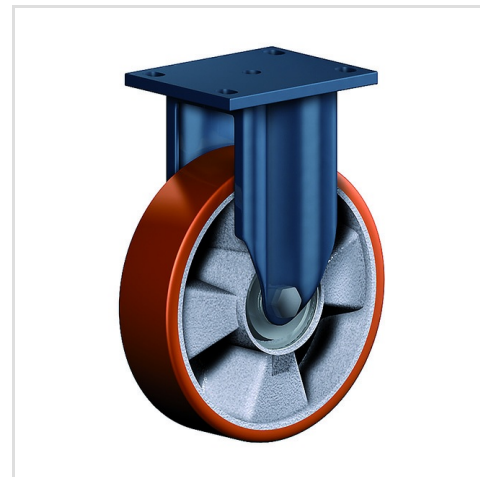


For applications where a super strong and durable caster is required,
one tapered roller and one axial ball bearing,
dust protection ring,
very strong integrated Kingpin,
locked nut, grease nipple, wheel axle bolted,
finish – painted

Fixed castor	Wheel-Ø A x width B mm: 180x50
Load Capacity kg:	700
Load capacity tested according to EN 12530 and EN 12527	
Overall height H mm:	241
Dimension of top plate TP mm:	135,110
Hole spacing HS mm:	105x80
Hole-Ø HD mm:	13
Wheel bearing:	Ball bearing

Advantages

- ✓ silent in motion
- ✓ low rolling resistance
- ✓ high abrasion and tear resistance
- ✓ high resistance to shocks
- ✓ good chemical resistance



Applications

- Metal-Technology
- Heavy duty dollies
- Trash container trucks
- Machinery moving dollies
- Workshops
- Racks
- Building-Industry
- Carpentry